

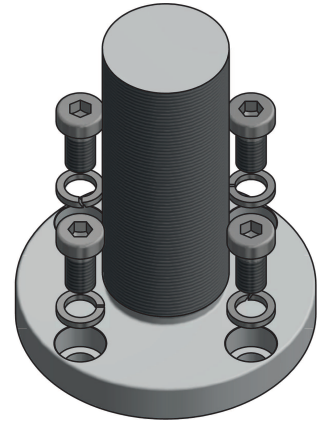
Contact terminals type TT / TTD

For insulators up to 170 kV

Product main features

- Material aluminum silver coated
- Complete set ready for installation
- Easy installation on the insulators

The contact terminals allow the interconnection between the head armature of terminations type TT or TTD to power transformers according to EN50299 up to 170 kV.



Technical data

Type	Drawing	Part no	Dimension mm	Equivalent cable cross-section (Cu/Al) mm ²
TT/TTD 72-170 kV	S2015	80052	Ø 30	300 / 700
TT/TTD 72-170 kV	S2015	80053	Ø 42	630 / 1380
TT/TTD 72-170 kV	S2015	80054	Ø 52	960 / 2100
TT/TTD 72-170 kV	S2011	80055	53 x 15	355 / 780