

Conductor and insulation preparation

Insulation pushing device XL

Application

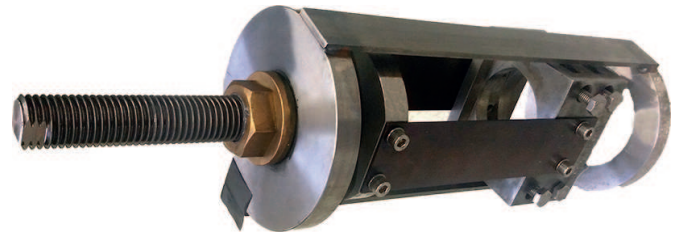
The insulation pushing device is applied to push back the extra large insulation of 400 kV and 500 kV polymeric cables with cross sections from 1600 mm² up to 2500 mm².

Scope of delivery

- Insulation pushing device
- 3 pressure discs
- Packaging: cardboard box

Technical Data

- Conductor cross-section: 1600 - 2500 mm²
- Material: carbon steel 1.1191



Ordering information

Part no	Type	Description	Weight kg
88878	1600 - 2500 mm ²	Insulation pushing device XL	10.0

Spare parts

Part no	Type	Description	Weight kg
76267	1600 mm ²	Pressure disc with inner Ø 54 mm	1.0
76268	2000 mm ²	Pressure disc with inner Ø 63 mm	1.0
64226	2500 mm ²	Pressure disc with inner Ø 67 mm	1.0
79249	Metaflux	Lubricant	0.1