

Assembly of silicone parts

Slide-on cone

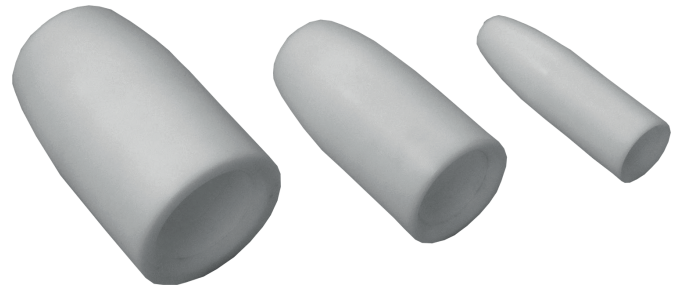
Application

For the installation process two slide-on cones are needed. Cone B is required to guide the joint body onto the prepared cable end. The selection of the cone B is according to the diameter over cable insulation of the prepared cable end.

Diameter of cone B: $D_{\text{insul}} \leq D_B < D_i$

Cone A is required for the basic assembly tool to help the insertion of the slide-on ring over the joint body. The proper size of the necessary cone A is therefore selected according to the inner diameter of the selected slide-on ring.

Diameter of cone A: $D_A = D_i - 1 \text{ mm}$



Scope of delivery

- Single slide-on cone
- Packaging, cardboard box

Ordering information

Part no	Diameter mm	Thread	Description	Part of Set	Weight kg
76179	56.0	M42 x 2	Slide-on cone	1	0.36
76180	59.0	M42 x 2	Slide-on cone	1	0.42
76181	64.0	M50 x 2	Slide-on cone	1	0.48
76182	69.0	M50 x 2	Slide-on cone	1	0.60
76183	74.0	M50 x 2	Slide-on cone	1	0.74
64250	74.0	M65 x 2	Slide-on cone	1	0.50
76184	79.0	M65 x 2	Slide-on cone	1	0.62
76185	84.0	M65 x 2	Slide-on cone	1	0.78
76186	89.0	M65 x 2	Slide-on cone	1	0.94
76187	94.0	M65 x 2	Slide-on cone	1	1.02
76188	99.0	M65 x 2	Slide-on cone	1	1.30
64251	99.0	M75 x 2	Slide-on cone	1 + 2	1.18
76189	104.0	M75 x 2	Slide-on cone	1 + 2	1.38
76190	109.0	M75 x 2	Slide-on cone	1 + 2	1.58
76191	114.0	M75 x 2	Slide-on cone	2	1.82
76192	119.0	M75 x 2	Slide-on cone	2	2.04
64252	119.0	M80 x 2	Slide-on cone	2	1.96
64197	124.0	M80 x 2	Slide-on cone	2	2.15
77127	128.0	M80 x 2	Slide-on cone	2	2.30
64198	129.0	M80 x 2	Slide-on cone	2	2.44
77126	134.0	M80 x 2	Slide-on cone	2	2.58