

## Assembly of connection

# High-pressure pump 60 t type PE 172

### Application

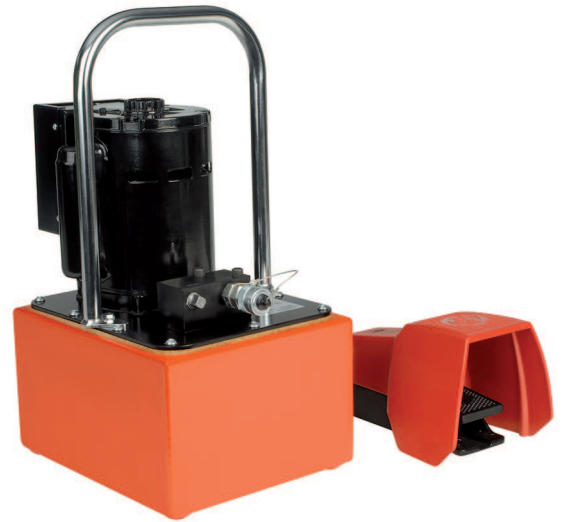
The electro-hydraulic high-pressure pump is applied for the assembly of press connectors.

### Technical Data

- Cable diameters: 185 - 2500 mm<sup>2</sup>
- Max. working pressure: 700 bar
- Hydraulic oil content: 6 l
- Material of oil reservoir: Aluminium
- Rated voltage: 220 V / 50/60 Hz
- Rated power: 370 W
- Cable length: 3.1 m

### Scope of delivery

- Electro-hydraulic high-pressure pump
- Foot switch
- Packaging, separate box or with other items in a box



### Ordering information

Part no	Type	Description	Weight kg
76691	PE 172 AM	High-pressure pump 60 t	30.0

### Additional tools (to be ordered separately)

Part no	Type	Description	Weight kg
76692	H240K	Press head 60 t	34.5
76693	185 - 2500 mm <sup>2</sup>	Hydraulic tube 60 t Hexagonal press dies 60 t	2.0